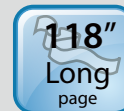


A Compact and Affordable Document Scanner



Features:

- Single-sided color documents up to legal size (8.5" x 14")
- Scan speed up to 25 ppm/ 50 ipm in both color or mono mode
- Easy-to-use operational panel
- ADF maximum capacity of 50 pages
- Resolution: 1200 dpi
- TWAIN driver provides auto color detection, auto crop, deskew and thresholding image-enhancing features
- Long page scanning up to 118"
- LED light source requires no warm-up time
- Deliver color, grayscale, or black and white image simultaneously in one scan
- Weight: 2.7 kg

Overview

Combining a flatbed scanner with the convenience of a 50-page ADF, the Avison AD120 is a compact and affordable productivity scanning solution delivering 25 ppm/ 50 ipm at 300 dpi. The combination of high productivity and affordability makes this series the obvious choice for reducing the total cost of scanning.

Automatic multiple images cropping

In addition, the scanner comes with the convenient feature of multiple images cropping. With this feature, various sizes of documents such as photos, ID Cards, or business cards can be placed on the flatbed and the scanner is able to crop and create multiple images according to the original sizes of the documents in one single scan.

Easy-to-use button scanning

The AD120 is easy to use through the LCD display and buttons on the panel. By selecting your destination and pressing the "Scan" button, you can scan document to searchable PDF, JPEG, BMP, or GIF file format, and send the scanned image to a preprogrammed destination such as e-mail, printer, image editing software application, or even a cloud server such as Google Drive, Dropbox, Evernote, or Microsoft SharePoint. Scanning is simply that easy!



Compact and earth-friendly design

The AD120 is compact and earth-friendly in design since it uses CIS (contact image sensor) technology which requires smaller space and the LED lamp as the light source. The LED lamps are lower power consumption and are designed to last for the life of the scanner, and their bright light renders true illumination to enable accurate color imaging.

Advanced settings via TWAIN driver

For advanced users who wish to control scan settings and obtain the best image quality, the Avison's AD120 is able to scan through Avison's advanced TWAIN user interface from TWAIN-compliant software application. Avison's TWAIN user interface provides various useful features to enhance your image quality including auto crop and deskew, auto color detection, color matching, color dropout and so on.

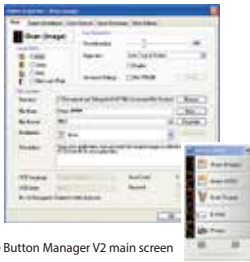
Powerful bundled software applications

The Avison AD120 comes with TWAIN and ISIS drivers, and is bundled with a suite of powerful software applications that include Avison Button Manager, AvScan X, and Nuance PaperPort 14. With Button Manager, you can scan to searchable PDF, JPEG, BMP, or GIF file format, sent the scanned image to a specified destination such as e-mail, printer, or other application with a press of a button. The AVScan X and Nuance PaperPort are highly effective image processing and document management software that helps you streamline your task more efficiently.

Avision | AD120 Document Scanner

Avision's Button Manager V2

-Completes your scan with a single step



The Button Manager V2 main screen

Button Manager V2 makes it easy for you to scan and send your image to your favorite destinations with a press one button. Now the new version comes with an innovative feature to let you scan and automatically upload the scanned document to popular cloud repositories such as Google Docs, Microsoft SharePoint, or FTP. In addition, the iScan feature allows you to insert the scanned image or recognized text after optional OCR (Optical Character Recognition) process to your text editor such as Microsoft Word to get your job done easily and quickly.

AVScan X

-The Intelligent Document Management Tool

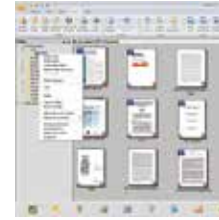


The AVScan X main screen

Document Imaging is the very first step of Document Management. However, poor quality images can cause serious problems to later indexing or storing processes. It may increase scanning labour costs and lowers the OCR accuracy. AVScan X ensures all documents are checked and polished at the time they are scanned such that the image quality is guaranteed before they are ready to use for other purposes. AVScan X is an intelligent scanning and electronic filing solution. AVScan 5.0 possesses distinct features that convert and index scanned information into electronic documents for easy storage and fast retrieval.

Nuance PaperPort SE14

- The Professional Choice to Organize and Share Your Documents



The PaperPort SE14 main screen

PaperPort SE 14 is Nuance's most popular scanning and document management solution, carefully designed specifically for home office use. Part traditional file cabinet, part digital-document desktop, PaperPort SE 14 is the fastest and easiest way to scan, share, search, and organize your documents. Additionally, PaperPort SE 14 now delivers anytime-anywhere access to your most important files however it's convenient for you – using a PC, Mac, iPhone, iPad, or Android device.



PAPERPORT SE 14



Avision Button Manager V2

AVScan X



TWAIN



Avision AD120 Product Specifications

Paper Feeding:	ADF 50-page (70g) capacity with flatbed
Scanning Technology:	Contact Image Sensor (CIS)
Light Source:	LED
Document size (ADF):	Max. 216 x 356 mm (8.5 x 14 in.) Min. 76.2 x 148 mm (3.0 x 5.83 in.)
Document Size (Flatbed):	Max. 216 x 297 mm (8.5 x 11.7 in.)
Long Page Mode:	3000 mm (118 in.)
Scanning Speed (ADF):	25 PPM/ 50 IPM (Color, A4, 300 dpi)
Scanning Speed (Flatbed):	4.5 sec. / 14.8 sec. (included backhome)
Paper Thickness:	60~105 g/m ² (16~28 lb.)
Optical Resolution:	1200 dpi
Output Resolution:	75, 100, 150, 200, 300, 400, 600 and 1200 dpi
Output Formats:	B/W, greyscale, 24-bit color
File Formats:	BMP, PNG, GIF, JPEG, PDF, Searchable PDF Multi-Page TIFF, TIFF, RTF, TXT, XPS, DOC, XLS, PPT, DOCX, XLSX, PPTX, HTML.
Bundled Software:	Avision Button Manager V2, Avision AVScan X, PaperPort SE 14
Interface/Drivers:	USB 2.0 (USB 3.0 Compatible) / TWAIN , ISIS
Power Supply:	Input: 100~240 VAC, 50/60 Hz Output: 24V, 1.5A
Power Consumption:	Operating: < 10 W Ready: <5W Sleep: <2.9 Off: <0.23 W
Environmental Factors:	Operating temperature: 10°C to 35°C (50°F to 95°F) Operating humidity: 10% to 85%
Dimensions (H x W x D):	402 x 330 x 112 mm (15.6 x 13 x 4.4 in)
Weight:	2.7 kg (5.9 lb.)
Recommended Daily Scanning Volume:	Up to 3,000 Sheets

We have endeavored to ensure that the information in this manual is accurate and that Avison is not responsible for printing or typographical errors. The above configuration is for reference only. The actual configuration may vary. Avison reserves the right to change the product outlook and design and the product outlook and design are subject to change. Avison Inc. owns the intellectual property rights of the product outlook and design and the product names mentioned in this document are trademarks of their respective companies. Wherein the third party product is for reference only and Avison does not warrant these products nor is responsible for the efficiency or use of these products.

System Requirements

- CPU: Intel Core 2 Duo or higher
- Memory: 1GB (32bit Windows)
2GB (64bit Windows)
- DVD-ROM: DVD ROM Drive
- USB: USB2.0 Port (USB 1.1 supported)
- Windows Operating System:
Windows 11, 10, 8.x, 7, Vista, XP SP3

Contents

- AD120 Scanner
- Power Supply
- Quick Guide
- USB 2.0 Cable
- CD-ROM includes:
 - Scanner Driver (TWAIN/ ISIS/ WIA Driver)
 - Avision Manager V2
 - Avision AVScan X
 - Nuance PaperPort SE 14



Avision
www.avision.com