

# CHOOSE EFFICIENCY AND VERSATILITY WITH THIS ALL-IN-ONE SCANNING SOLUTION



## Maximised productivity

Capture various types of documents accurately and efficiently with the DR-F120: a compact all-in-one scanning solution that offers both an automatic document feeder (ADF) and flatbed. You can save yourself valuable time using the 50-sheet document feeder, with its faster 20ppm scanning speeds. The DR-F120 can be relied on to get through your work with capability to handle up to 1500 scans a day.

## DR-F120

B&W AND COLOUR  
SPEED  
20 PPM / 18 IPM

SUGGESTED DAILY  
VOLUME  
500 - 1,500

AUTOMATIC  
DOCUMENT  
FEEDER  
50 SHEETS

INTREGATED  
FLATBED

# VERSATILE DESIGN, POWERFUL FEATURES

## Superior image quality

The DR-F120 delivers superior quality results time after time, due to its 2400dpi scanning, wide range of built-in image enhancement features and Canon's renowned imaging technology. You'll achieve unprecedented colour accuracy that stays true to the original document via the scanner's 3-Dimensional Color Correction function.



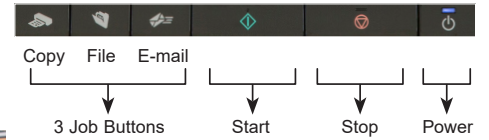
## Versatile paper handling

The DR-F120 gives you complete flexibility to scan a wide range of materials despite its compact body size and small footprint. The ADF path accommodates A4-width documents, and media of up to 1,000mm in length. You'll enjoy increased reliability and time-savings when scanning mixed documents with Canon's dependable separation and feed roller mechanism. The flatbed scanner is ideal for handling media like books, passports or magazines, and effortlessly captures pages up to legal size. It's equally at home with photos or other thick, thin and delicate documents.



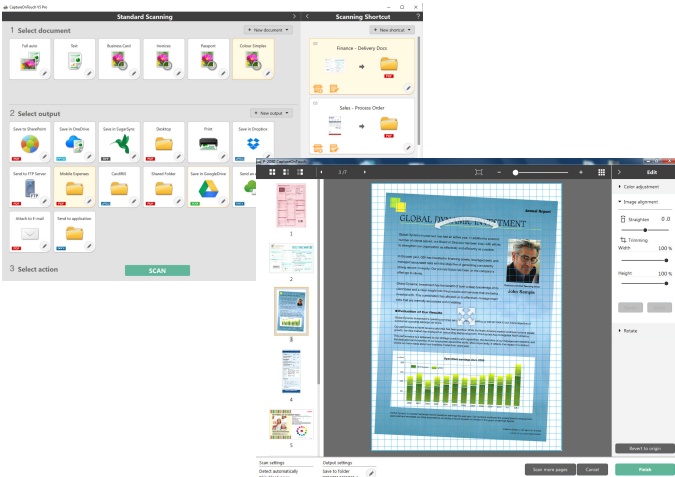
## Simple, user friendly operation

Achieve superb results with just a single touch of a button using the Full Auto Mode that automatically applies the best settings for each scanned image. Built-in tools eliminate blank pages and automatically detect paper size and text orientation; while the automatic deskew feature straightens documents fed at an angle. Frequent tasks can be made even simpler by assigning them to the 3 job buttons on the scanner panel.





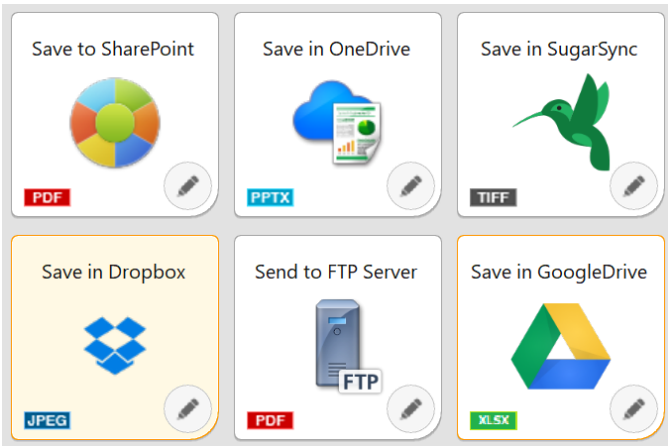
**Intuitive and easy-to-use software**



The DR-F120 offers a simple and intuitive scanning experience using Canon's CaptureOnTouch software. Users can scan, edit and send their documents even more easily with this versatile scanning solution. Its step-by-step, icon-based user interface lets users quickly convert their paper documents to multiple file formats (PDF, TIFF, JPEG, BMP, PNG and PowerPoint). Thanks to features like the Optical Character Recognition (OCR), CaptureOnTouch is equally capable as a simple document filling solution that lets users scan and create searchable PDF documents - including easy text-based search and retrieval.

**Cloud service plug-ins**

The CaptureOnTouch software includes plug-ins for connecting to cloud and ECM services such as Google Drive™, Microsoft SharePoint®, SugarSync, OneDrive (Windows only) and Dropbox.



**Easy to own and maintain**

DR-F120 is easy to maintain because of its user-friendly design. The feed rollers are user-replaceable, which means you won't incur the cost of calling out a service technician. Your costs stay low due to the scanner's high energy-efficiency of less than 20W in operation.



**Energy-efficient technology**

Thanks to energy-saving technologies, the DR-F120 allows to keep costs low. The scanner has a high energy-efficiency of less than 20W in operation.



# TECHNICAL SPECIFICATIONS

## GENERAL PRODUCT INFORMATION

<b>Type</b>	Desktop Type Flatbed Scanner with ADF
<b>Scanning sensor unit</b>	CMOS CIS 1 Line Sensor
<b>Optical resolution</b>	600dpi ADF / 1200dpi Flatbed
<b>Light source</b>	RGB LED
<b>Scanning side</b>	Front / Back / Duplex
<b>Interface</b>	High speed USB 2.0
<b>Dimensions (W x D x H)</b>	Tray Closed : 469 (W) x 335 (D) x 120 (H) mm Tray Opened: 495 (W) x 335 (D) x 201 (H) mm
<b>Weight</b>	Approx. 4.6kg
<b>Power requirements</b>	AC220 - 240V (50/60Hz)
<b>Power consumption</b>	Scanning 19.9W or less, Sleep Mode 2.3W or less, Power Turned Off 0.2W or less
<b>Operating environment</b>	10 - 32.5 °C (50 - 90.5 °F), Humidity: 20 - 80% RH
<b>Environmental compliance</b>	RoHS
<b>SCANNING SPECIFICATIONS</b>	
<b>Scanning speed (A4, 200dpi)</b>	
<b>Black and White</b>	ADF: 20ppm / 36ipm
<b>Colour</b>	ADF: 10ppm / 18ipm
<b>Output resolution</b>	150 x 150dpi, 200 x 200dpi, 240 x 240dpi, 300 x 300dpi, 400 x 400dpi, 600 x 600dpi, 1200 x 1200dpi, 2400 x 2400dpi
<b>Output mode</b>	Black & White, Error Diffusion, Advanced Text Enhancement, Advanced Text Enhancement II, 8-bit Greyscale (256-Level), 24-bit Colour
<b>Suggested Daily Volume</b>	from 500 to 1,500 scans/day
<b>DOCUMENT SPECIFICATIONS</b>	
<b>Width</b>	ADF: 51 - 216mm Flatbed: up to 216mm
<b>Length</b>	ADF: 89 - 356mm Flatbed: up to 356mm
<b>Thickness</b>	ADF :35 - 128/m <sup>2</sup> (0.05 - 0.15mm)
<b>Long document mode</b>	up to 1000mm
<b>Card Scanning</b>	Width: 51mm Length: 89mm Thickness 128 - 209g/m <sup>2</sup>
<b>Paper Separation</b>	Retard Roller Method
<b>Feeder Capacity</b>	50 Sheets (80/mg <sup>2</sup> )
<b>SPECIAL FEATURES</b>	Automatic Page Size Detection, Deskew, Auto Colour Detection, Text Enhancement, Skip Blank Page, , Text Orientation, MultiStream, Preset Gamma Curve, Prescan, Edge Emphasis, Colour Dropout (RGB), Colour Enhancement (RGB), Moire Reduction, Character Emphasis, Prevent Bleed Through/ Remove Background, Remove Shadow, Border Removal, Erase Dot, Erase Notch, Punch Hole Removal, Apply corrections for photos, Double Feed Detection (By Length), Automatic Feeder/Flatbed detection, Rapid Recovery System
<b>BUNDLED SOFTWARE</b>	
<b>Windows</b>	ISIS/TWAIN Driver CaptureOnTouch
<b>CONSUMABLES &amp; ACCESSORIES</b>	
<b>Cosumables</b>	Exchange Roller Kit

Scanning speed may vary depending on PC environment, scanner settings, and other factors.  
All data is based on Canon's standard testing methods.  
Specifications are subject to change without notice.  
™ and ©, all company and/or product names/logos are trademarks and/or registered trademarks of their respective manufacturers in their markets and/or countries.

## Flatbed Scanner Unit 102



## Extra advantages make a difference

The DR-F120 comes with this optional accessories that enables users to be even more productive. The A4 optional Flatbed Scanner units allow users to scan bound books, journals and fragile media. This USB-connected dual-scanning flatbed unit works seamlessly with the DR-F120, so users can apply the same image-enhancement features to any scan.

## Software Developer Kit (SDK)

Software developer kits and tools are available through the Canon Developer Programme To register for the programme:

- Please visit the registration page - <https://developers.canon-europe.com/>
- If you experience any issues signing up please contact CDP admin at [cdp-admin@canon-europe.com](mailto:cdp-admin@canon-europe.com)