

# EASY-TO-USE DOCUMENT SCANNER DESIGNED FOR SIMPLICITY



## Designed for simplicity

Quickly and easily convert your paper documents to digital formats and transform your workflows in your office. The imageFORMULA R30 takes simplicity to the next level thanks to no software or drivers needed to be installed. Just plug & scan in few seconds using the embedded CaptureOnTouch Lite software. Save time and effort in your office or home with high-speed, reliable scanning of all types of documents, and producing outstanding image quality results

## R30

SCANNING SPEED  
UP TO 25 PAPERS  
PER MINUTE

AUTOMATIC  
DOCUMENT FEEDER  
60 SHEETS

COMPATIBLE WITH  
WINDOWS & MAC

EASY TO USE  
BUILT-IN  
SOFTWARE

## A document scanner suitable for small and home offices and in coworking spaces.



### Enhance efficiency

Save valuable time with the built-in CaptureOnTouch Lite software and the high-speed double-sided scanning. A device with a quick and simple operation that is easy for anyone to use and does not require any software installation. Just connect the scanner to a Windows or Mac devices, start scanning in less than 1 minute.

### Boost productivity

Waste no time with productive double-sided colour scanning of up to 50 images per minutes and stack up to 60 sheets in the large automatic document feeder for fast batch scanning. The R30 allows to scan a range of different document types, from thick to thin, receipts, including plastic or embossed cards.

### Reduce environmental impact

Minimise your environmental impact with this energy-efficient device that employs less than 10W of electricity during use. Reduce waste thanks to high-quality technologies and high durability consumables. The lower weight helps to make logistics more efficient and the device is packed with eco-friendly materials and a reduced use of plastic.

### Produce high quality output

No need to constantly adjust settings when scanning different documents. Use all the automatic image enhancement features to make life easier, such as auto size detection, deskew and text orientation correction, and also automatic colour detection.



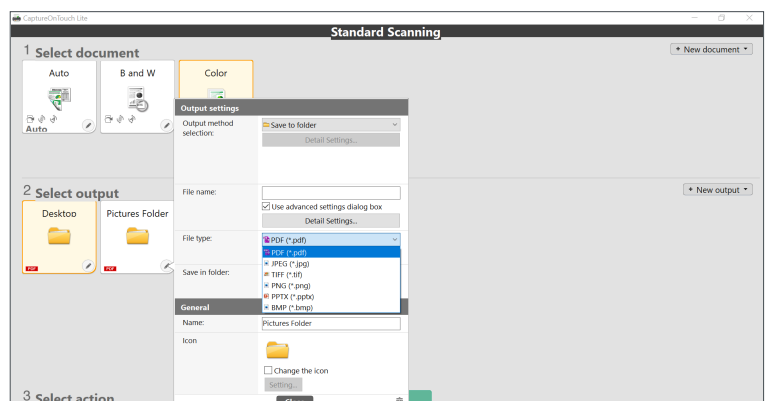
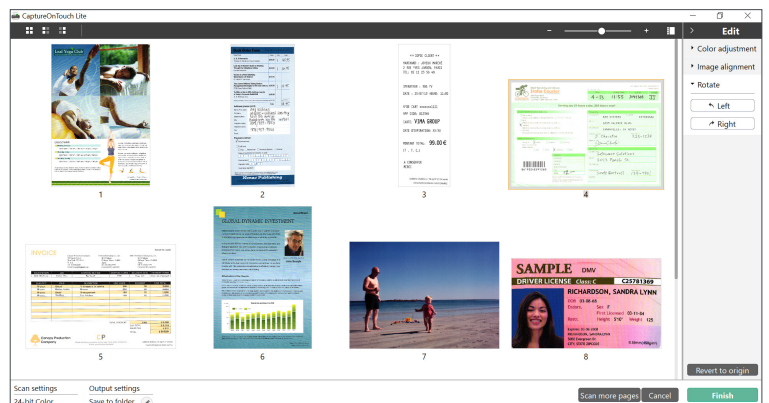


## Capture OnTouch<sup>Lite</sup>

### Easy-to-use software that achieves superb results

This software is designed to offer maximum portability and convenience. It aims to help users to easily, quickly, and effortlessly connect with the devices to use functions without the need to install any drivers or application software. Just connect the USB cable to your Windows or Mac PC and start scanning. Its intuitive interface provides easy 1-2-3 step operation, allows to register multiple document scan modes and to select various output destinations including using OCR to create searchable/editable files.

The embedded CaptureOnTouch Lite software supports scanning different type of documents to multiple file formats, including PDF, TIFF, JPEG, PNG, BMP and PPTX (PowerPoint)\*. Besides scanning to folder, additional plug-in connectors can be installed including to sending directly to cloud applications such as SharePoint, GoogleDrive, OneDrive, DropBox, helping you maintain smooth and efficient workflows.



# TECHNICAL SPECIFICATIONS

## PRODUCT SPECIFICATIONS

<b>Type</b>	Desktop type double-sided capturing sheet fed scanner
<b>Scanning Sensor Unit</b>	CIS
<b>Optical Resolution</b>	600 dpi
<b>Light Source</b>	RGB LED
<b>Scanning Side</b>	Front / Back / Duplex
<b>Interface</b>	High Speed USB 2.0
<b>Dimensions (WxDxH)</b>	Tray closed: 293*251*245 mm Tray opened: 293*600*382 mm
<b>Weight</b>	Approx. 3.0kg or less
<b>Power Requirements</b>	AC220 - 240V (50/60Hz)
<b>Power Consumption</b>	Scanning: 10W or less Sleep mode: 1.0W Power OFF: 0.1W or less

## Operating Environment

Room temperature: 10 °C to 32.5 °C  
Humidity: 20% to 80% RH

## Environmental Compliance

RoHS

## SCANNING SPECIFICATIONS

<b>Black and White</b>	25ppm / 50ipm (A4, 200dpi)
<b>Colour</b>	9ppm / 19ipm (A4, 200dpi)
<b>Output Resolution</b>	150 / 200 / 300 / 400 / 600 dpi
<b>Output Mode</b>	Colour, Grayscale, Black & White

## DOCUMENT SPECIFICATIONS

<b>Width</b>	50.8 - 216 mm
<b>Length</b>	54 - 356 mm
<b>Thickness</b>	0.04 - 0.25 mm
<b>Business Card Scanning</b>	Width: 50-55mm - Length: 85-91mm - Thickness: 128mm
<b>Plastic Card Scanning</b>	Width: 86mm - Length: 54mm - Thickness: less than 1.4mm Embossed card can be scanned. Loading number: 3 cards for non-embossed card, 1 card for embossed card
<b>Paper Separation</b>	Retard Roller Method
<b>Feeder Capacity</b>	60 sheets (80g/m <sup>2</sup> )

## SPECIAL FEATURES

<b>Special Features</b>	Built-in Plug and Scan technology, Auto Color Detection, Auto Page Size Detection, Auto Resolution Setting, Background Smoothing, Character Emphasis, Color Dropout/Enhance Color, Deskew, Double-Feed Detection, Edge Emphasis, Image Rotation, Moiré Reduction, Pre-Scan, Prevent Bleed-Through/Remove Background, Skip Blank Page, Text Enhancement, Text Orientation Recognition, Three-Dimensional Color Correction
-------------------------	--

## BUNDLED SOFTWARE

<b>Windows</b>	Built in CaptureOnTouch Lite
<b>Mac</b>	Built in CaptureOnTouch Lite

## OTHER OPTIONS

<b>Consumables</b>	Exchange Roller Kit
--------------------	---------------------

All data is based on Canon standard testing methods except where indicated.  
Subject to change without notice.

## Disclaimers

\*Pptx and BMP formats supported only by Windows

Scanning speed may vary depending on PC environment, scanner settings, and other factors.  
Specifications are subject to change without notice.